

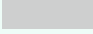

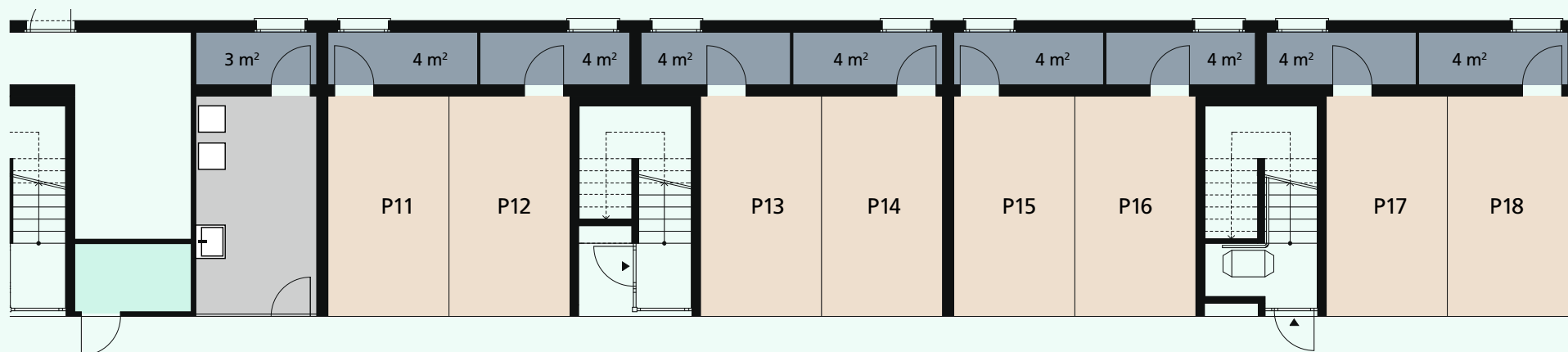
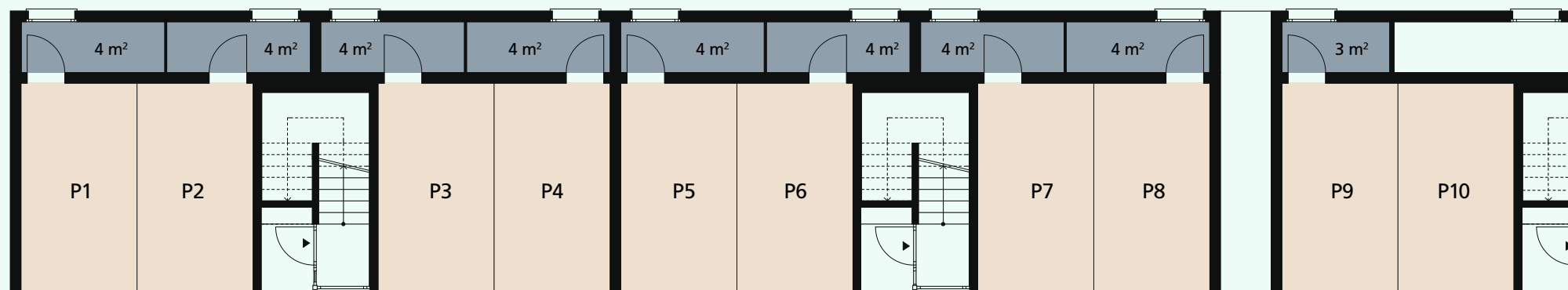
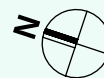
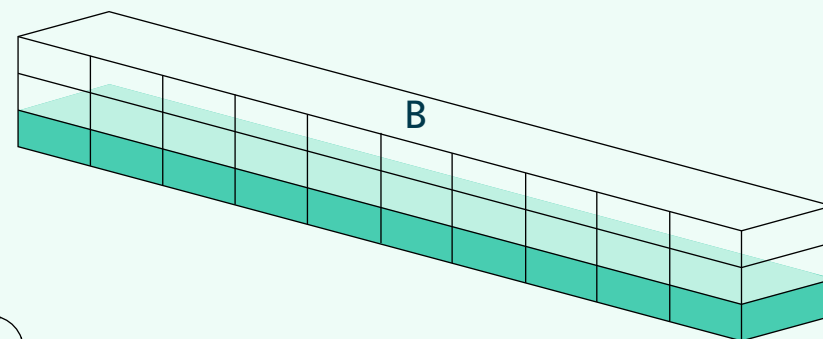


Edificio B

Piano terra con parcheggi

-  Cantina
-  Locale elettrico
-  Lavanderia
-  18 parcheggi



Affitto:
G&P Immobiliare GmbH
Lugano Via Besso 59
CH-6900 Lugano

T +41 (0)91 210 25 25
F +41 (0)91 967 77 00
lugano@gp-gruppe.ch
www.gp-gruppe.ch

www.lisolaverde.ch